

241 Deansgate, Manchester, Lancashire, M3 4EL
Tel: 0161 637 8336
Email: contactus@ascendproperties.com
www.ascendproperties.com

Ascend

Built on higher standards



One Cambridge Street, Manchester

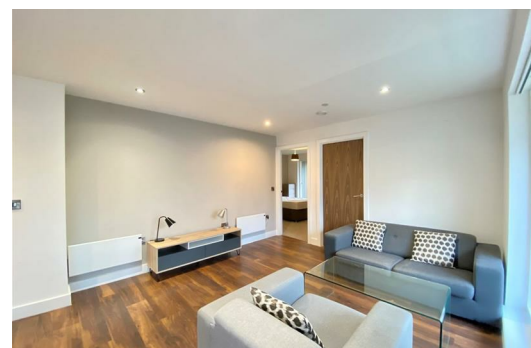
£1,550 PCM

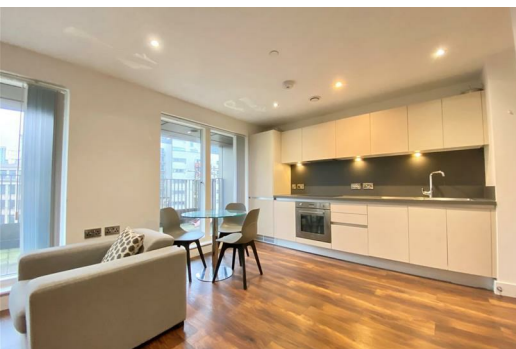
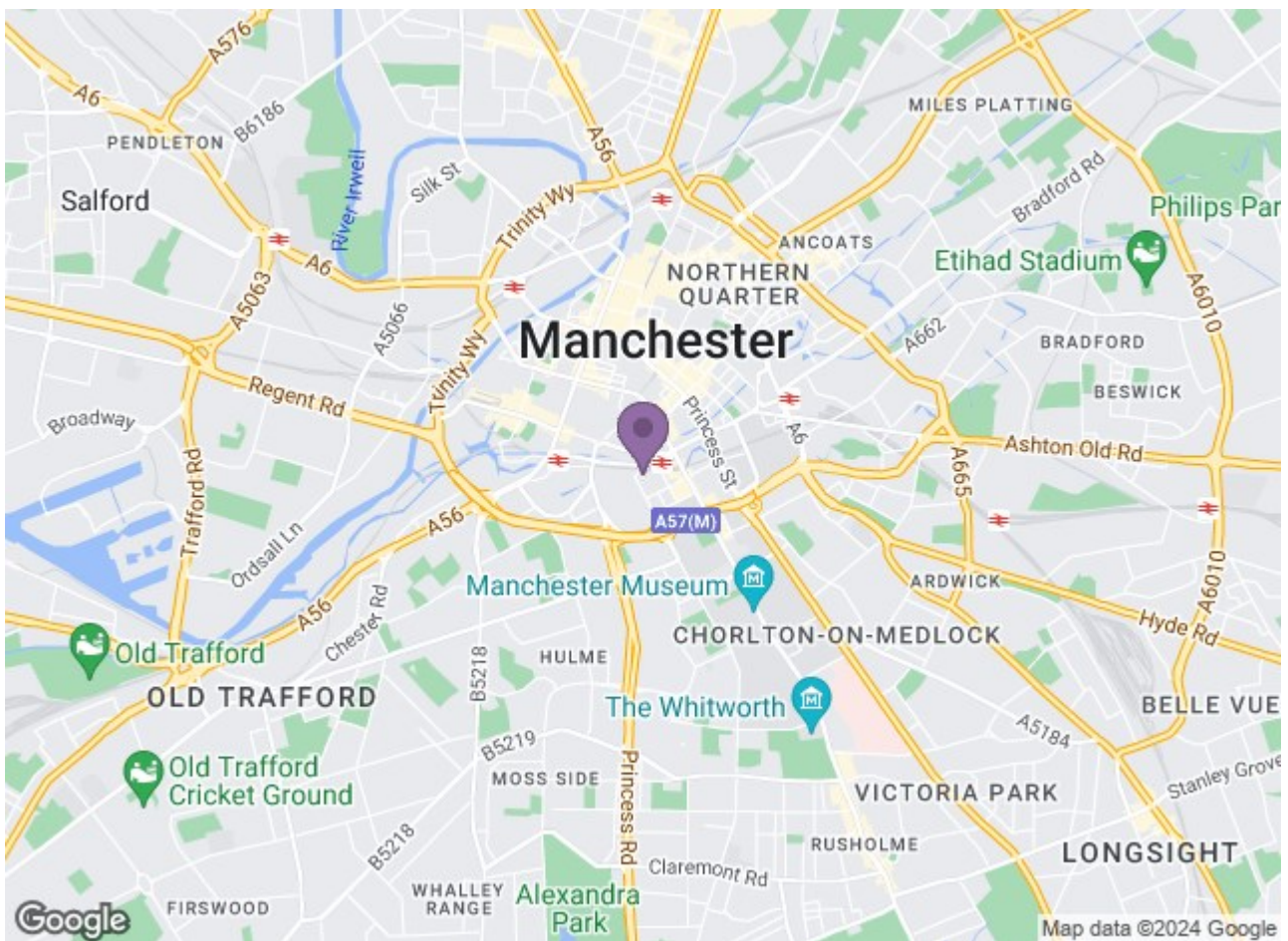
Larger than average corner unit with wrap around balcony!

This unique two-bedroom, two-bathroom apartment is located in an exciting new development right in the heart of Manchester city centre. You're positioned in a highly sought-after and beautiful building, tucked away in a peaceful retreat which is just a stone's throw from all the action.

This recently built, ultra-modern and uber-spacious apartment is one of just a small selection of modern buildings highlighted amongst a backdrop of Manchester's historic mill conversions. A stylish force to be reckoned with, these apartments were built with quality in mind. Complete with walnut flooring, a fully-fitted German engineered kitchen and two fully fitted bathrooms with Villeroy and Boch fixtures, the spec must be seen to be appreciated. You'll also benefit from some amazing views out over the whole of Manchester from the comfort of your own balcony - what more could you want from city centre living? Did we also mention the double glazed floor-to-ceiling windows and Hyperoptic fibre broadband installation too?

The location is absolutely spot-on. Just a stone's throw from Whitworth Street and a few minutes' walk to Oxford Road train station, you're perfectly placed for both work and travel. Deansgate, Castlefield and Spinningfields are all just a short stroll away too - you really couldn't be in a better spot.





Energy Efficiency Rating		Environmental Impact (CO ₂) Rating	
Current	Potential	Current	Potential
<p>Energy Efficiency Rating: B (79) / A (81)</p>		<p>Environmental Impact (CO₂) Rating: B (81) / A (81)</p>	
<p>England & Wales</p>		<p>England & Wales</p>	